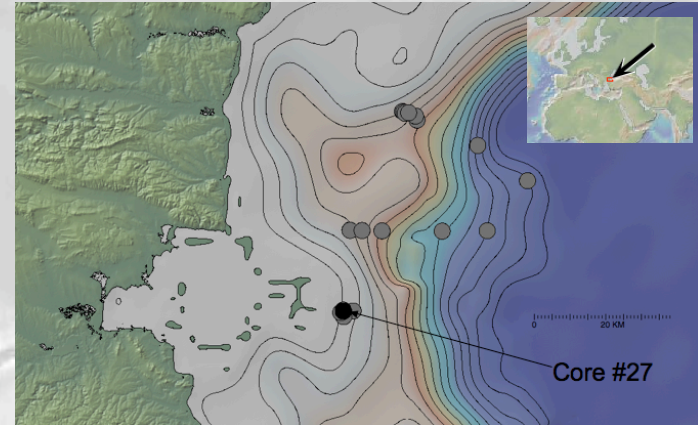


Mapping, Sampling, and Dating Submerged Black Sea Shorelines

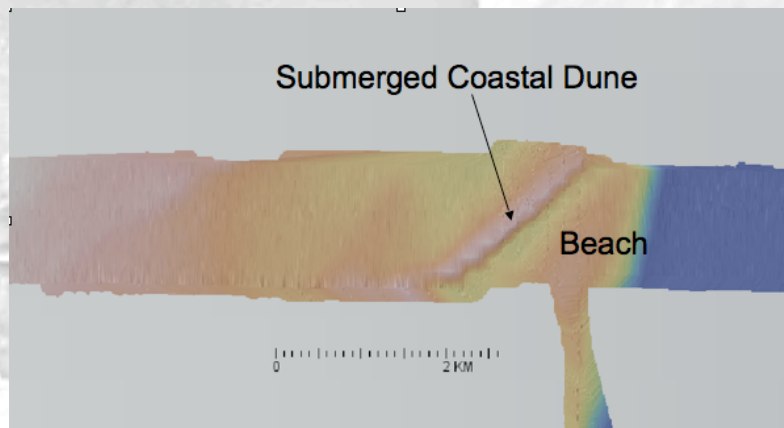
Daniel Cohen, Department of Earth and Environmental Science at Columbia University



R/V Akademik



The 21 cores collected on the 2009 R/V Akademik expedition.



Map rendered from side-looking sonar data (white < 90m, blue > 95m).



Optically Stimulated Luminescence (OSL) dating samples being taken.